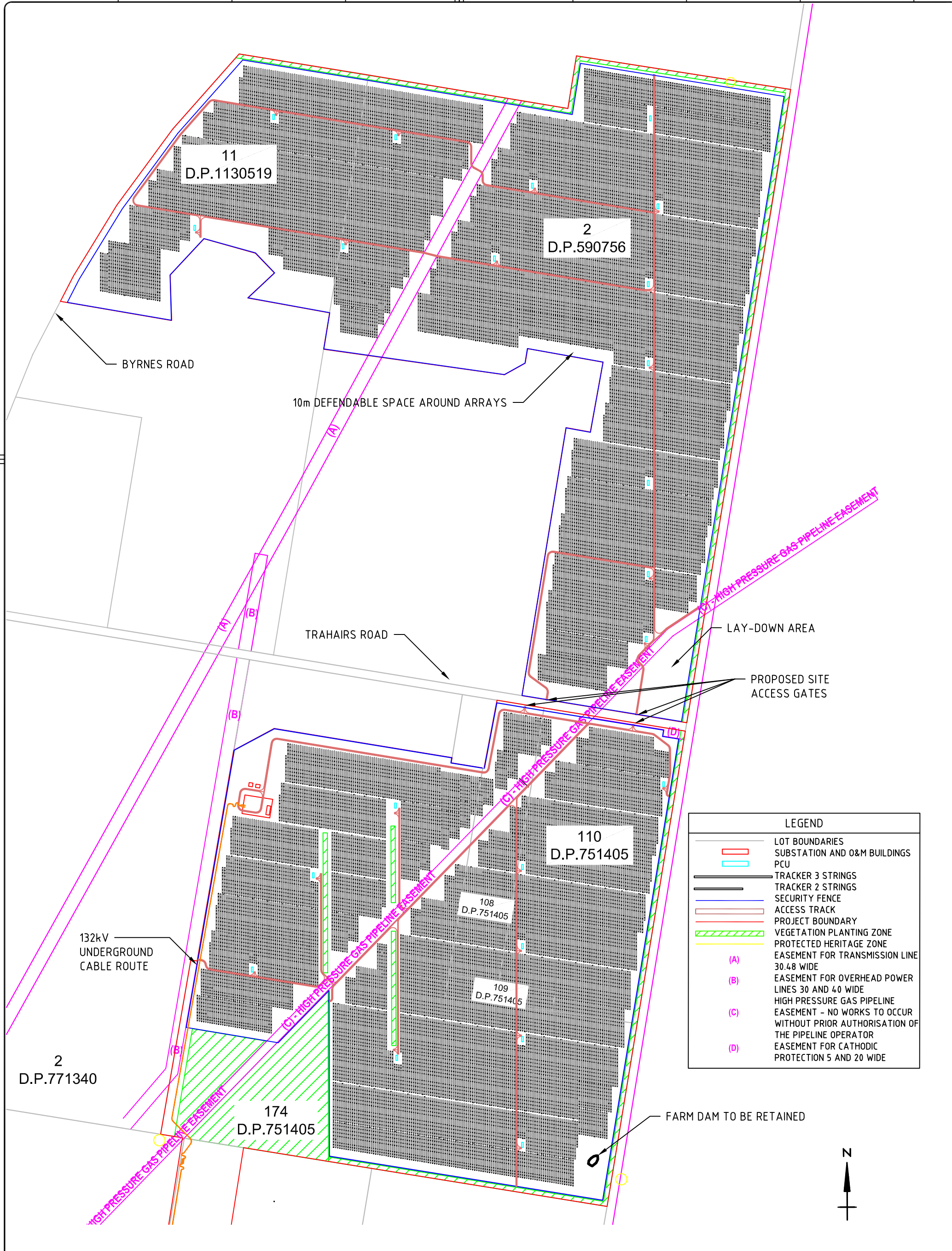


1 2 3 4 5 6 7 8

A
B
C
D
E
F
G
H
I
J



LEGEND	
	LOT BOUNDARIES
	SUBSTATION AND O&M BUILDINGS
	PCU
	TRACKER 3 STRINGS
	TRACKER 2 STRINGS
	SECURITY FENCE
	ACCESS TRACK
	PROJECT BOUNDARY
	VEGETATION PLANTING ZONE
	PROTECTED HERITAGE ZONE
(A)	EASEMENT FOR TRANSMISSION LINE 30.48 WIDE
(B)	EASEMENT FOR OVERHEAD POWER LINES 30 AND 40 WIDE
(C)	HIGH PRESSURE GAS PIPELINE EASEMENT - NO WORKS TO OCCUR WITHOUT PRIOR AUTHORISATION OF THE PIPELINE OPERATOR
(D)	EASEMENT FOR CATHODIC PROTECTION 5 AND 20 WIDE

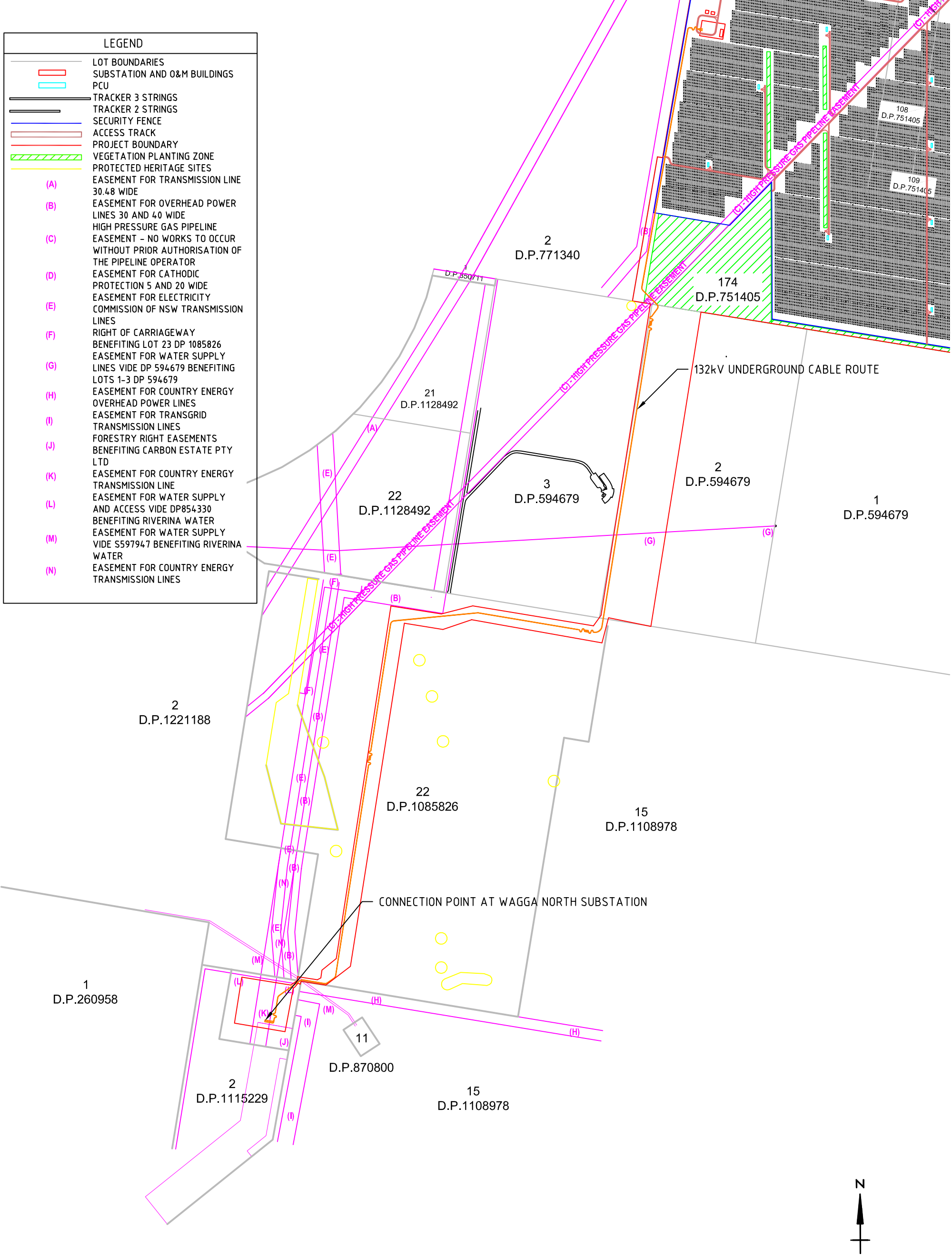
REVISION HISTORY	COMMENT
A	ISSUED FOR INFORMATION
B	REVISED BASED ON CLIENT FEEDBACK, ADDED SHEET FOR 132kV CABLE RUN
C	FENCE, TRACK, EASEMENT AND CABLE ROUTE ADJUSTED
D	HERITAGE ZONES ADDED, FENCE AND CABLE ROUTE ADJUSTED
-	

DRAWING NUMBER	BOM	CIVIL	DWG	001	D	SHEET 1 OF 2
BOMEN SOLAR FARM SITE EQUIPMENT LAYOUT SOLAR FARM AREA						
DRAWN	DRAFTING CHECK	DESIGNER	DESIGN APPROVAL	PROJECT MANAGER		
P. OXLEY 09/05/2019	H. MURTAGH 09/05/2019	P. OXLEY 09/05/2019	H. MURTAGH 09/05/2019			

1 2 3 4 5 6 7 8

A
B
C
D
E
F
G
H
I
J

LEGEND	
	LOT BOUNDARIES
	SUBSTATION AND O&M BUILDINGS
	PCU
	TRACKER 3 STRINGS
	TRACKER 2 STRINGS
	SECURITY FENCE
	ACCESS TRACK
	PROJECT BOUNDARY
	VEGETATION PLANTING ZONE
	PROTECTED HERITAGE SITES
(A)	EASEMENT FOR TRANSMISSION LINE 30.48 WIDE
(B)	EASEMENT FOR OVERHEAD POWER LINES 30 AND 40 WIDE
(C)	HIGH PRESSURE GAS PIPELINE EASEMENT - NO WORKS TO OCCUR WITHOUT PRIOR AUTHORISATION OF THE PIPELINE OPERATOR
(D)	EASEMENT FOR CATHODIC PROTECTION 5 AND 20 WIDE
(E)	EASEMENT FOR ELECTRICITY COMMISSION OF NSW TRANSMISSION LINES
(F)	RIGHT OF CARRIAGEWAY BENEFITING LOT 23 DP 1085826
(G)	EASEMENT FOR WATER SUPPLY LINES VIDE DP 594679 BENEFITING LOTS 1-3 DP 594679
(H)	EASEMENT FOR COUNTRY ENERGY OVERHEAD POWER LINES
(I)	EASEMENT FOR TRANSGRID TRANSMISSION LINES
(J)	FORESTRY RIGHT EASEMENTS BENEFITING CARBON ESTATE PTY LTD
(K)	EASEMENT FOR COUNTRY ENERGY TRANSMISSION LINE
(L)	EASEMENT FOR WATER SUPPLY AND ACCESS VIDE DP854330 BENEFITING RIVERINA WATER
(M)	EASEMENT FOR WATER SUPPLY VIDE S597947 BENEFITING RIVERINA WATER
(N)	EASEMENT FOR COUNTRY ENERGY TRANSMISSION LINES



REVISION HISTORY	COMMENT
A	ISSUED FOR INFORMATION
B	REVISED BASED ON CLIENT FEEDBACK, ADDED SHEET FOR 132kV CABLE RUN
C	FENCE, TRACK, EASEMENT AND CABLE ROUTE ADJUSTED
D	HERITAGE ZONES ADDED, FENCE AND CABLE ROUTE ADJUSTED
-	-

DRAWING NUMBER	BOM	CIVIL	DWG	001	D	SHEET 2 OF 2
BOMEN SOLAR FARM SITE EQUIPMENT LAYOUT 132kV CABLE ROUTE						
DRAWN	DRAFTING CHECK	DESIGNER	DESIGN APPROVAL	PROJECT MANAGER		
P. OXLEY 09/05/2019	H. MURTAGH 09/05/2019	P. OXLEY 09/05/2019	H. MURTAGH 09/05/2019			