

DINAWAN ENERGY HUB: COMMUNITY BENEFIT SHARING

Exchange ideas with community members on sharing the benefits of the Dinawan Energy Hub

Coleambally: 22 August 2023, 6pm
Community Club, 3 Falcon Road

Darlington Point: 23 August 2023, 6pm
Sports Club, 6 Demamiel Street

Jerilderie: 24 August 2023, 6pm
Ian Gilbert Room, Civic Hall
33 Jerilderie Street

www.dinawanenergyhub.com
info@dinawanenergyhub.com

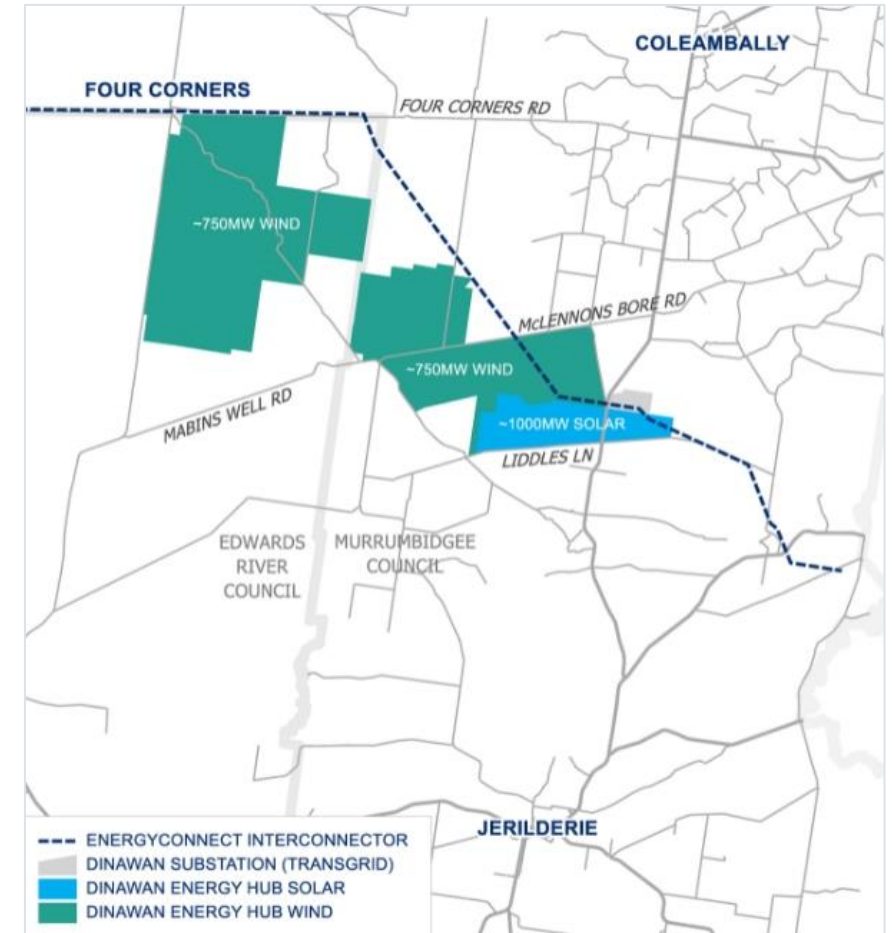


Spark Renewables would like to acknowledge the Traditional Owners and Custodians of the lands on which we operate. We pay our respects to Elders past, present and emerging.



COMMUNITY WORKSHOP AGENDA

1. Dinawan Energy Hub project
 - *Status of the South-West Renewable Energy Zone*
 - *Project completed site surveys*
 - *Timeline*
2. Setting objectives for benefit sharing
 - *Objectives and timeline*
 - *Ideas from the community*
 - *Discussion*



Dinawan Energy Hub project is located about halfway between Coleambally and Jerilderie, and about 60km south of Darlington Point

DINAWAN ENERGY HUB PROJECT

AUGUST 2023

SOUTH-WEST RENEWABLE ENERGY ZONE

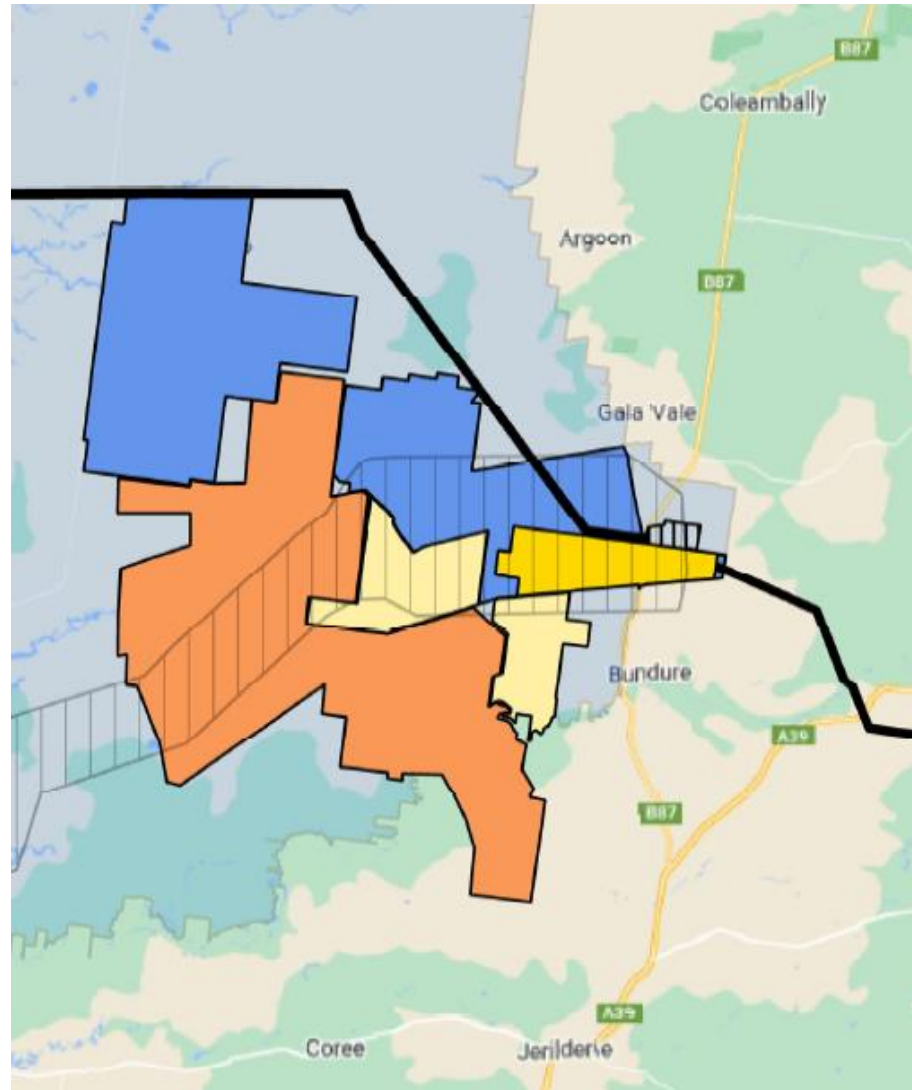
The Dinawan Energy Hub comprises the Dinawan Solar Farm and Dinawan Wind Farm and is proposed within the South-West Renewable Energy Zone (REZ), along with many other renewable energy projects.





- The South-West REZ has a capacity of 2.5 GW (gigawatts) based on current design of transmission infrastructure (eg Project EnergyConnect*).
- Access to the transmission network will be awarded via an access right tender process
- Response to the Expression of Interest from potential projects represented 34 GW in the South-West REZ.
- Certainty of funding to hosting councils and communities hinges on receiving development approvals from the NSW Department of Environment and Planning, along with access rights being awarded.
- An access fee would include a component for community and employment initiatives.

* Project EnergyConnect (PEC): ElectraNet and Transgrid are partnering to deliver an energy interconnector between the power grids of South Australia and NSW.




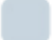
REGIONAL CONTEXT: NEIGHBOURING DEVELOPMENTS





KEY

-  Dinawan Solar Farm
-  Dinawan Wind Farm

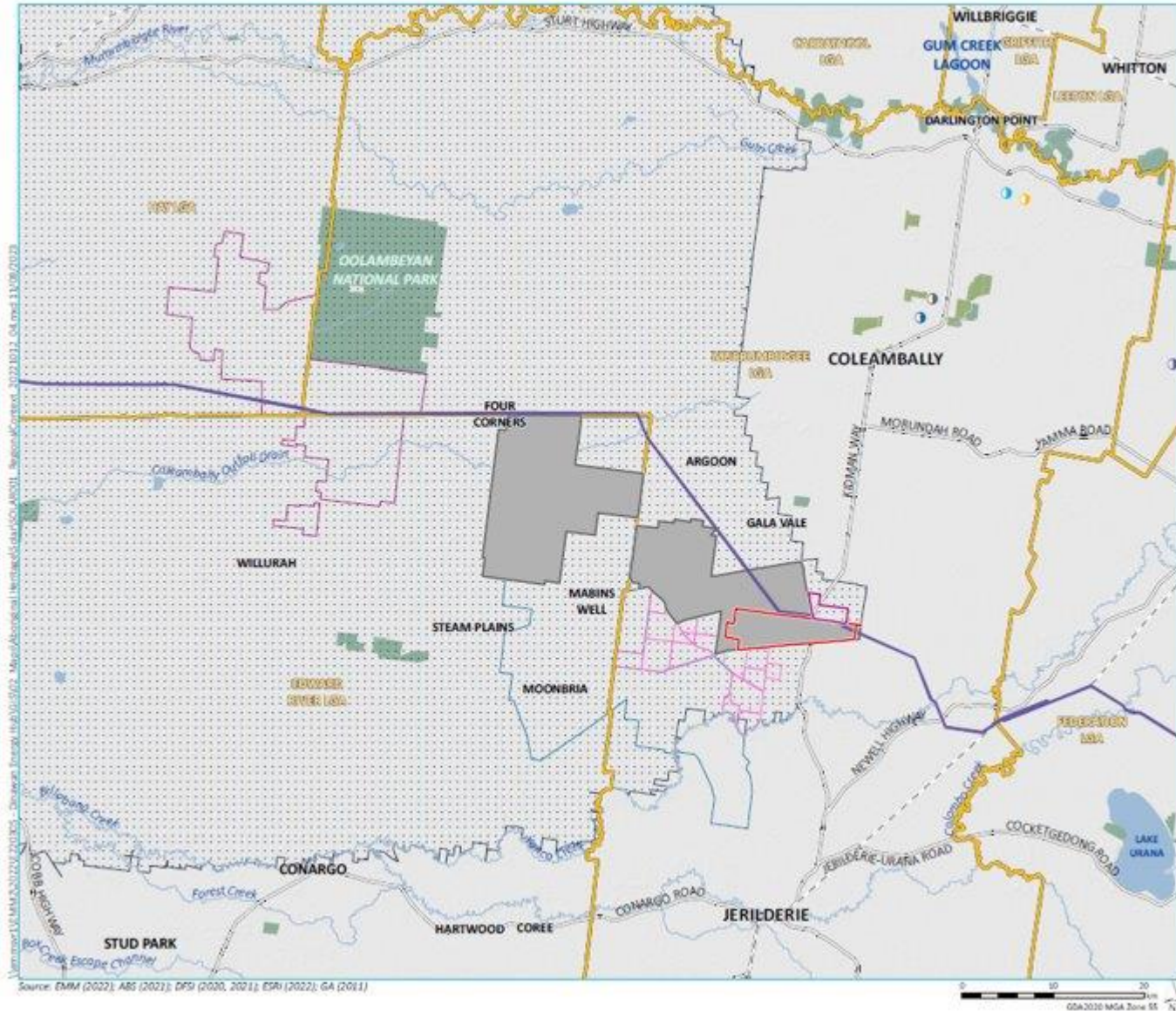
Project EnergyConnect (Transgrid)

-  Dinawan Substation
-  Transmission Line
-  VNI West Corridor
-  Renewable Energy Zone

Neighbouring Renewable Energy Developments

-  Argoon Wind Farm
-  Yanco Delta Wind Farm

REGIONAL CONTEXT: NEIGHBOURING DEVELOPMENTS



KEY

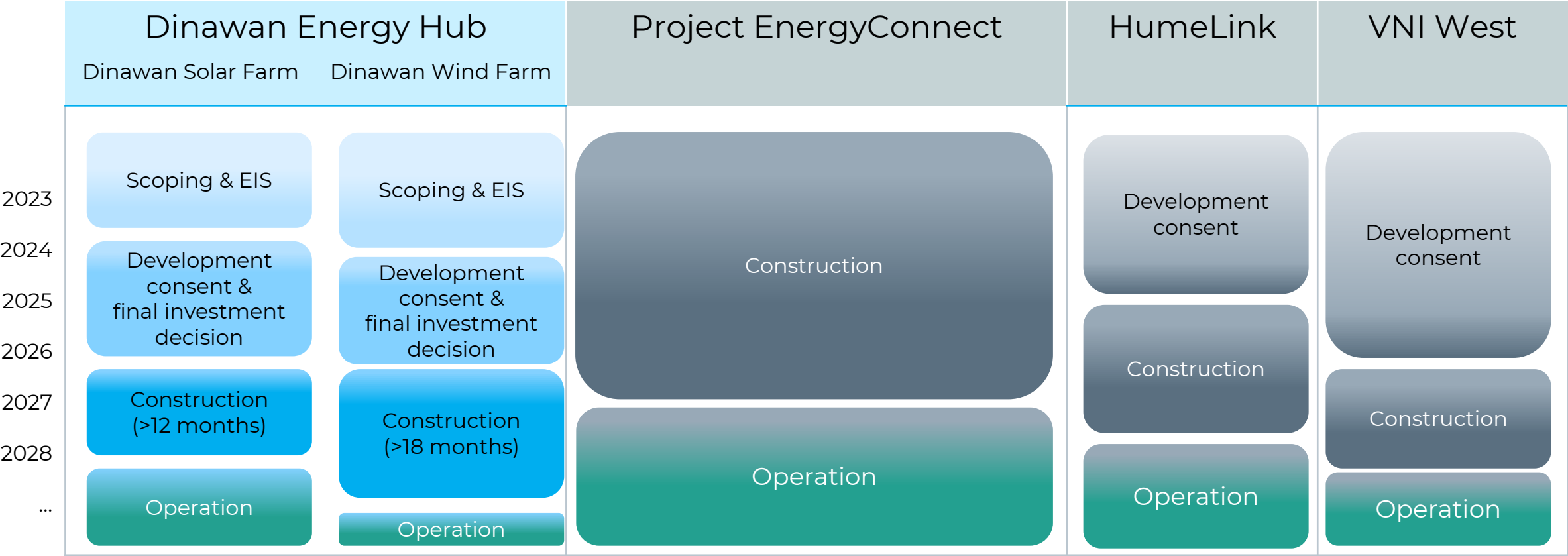
- Project area
- Dinawan Wind Farm
- Project EnergyConnect (Transgrid)**
- Dinawan Substation
- Transmission line
- Existing environment**
- Rail line
- Major road
- Named watercourse
- Named waterbody
- NPWS reserve
- State forest
- Local government area
- Neighbouring renewable energy developments**
- Bullawah Wind Farm (proposed)
- Yanko Delta Wind Farm (proposed)
- Argoon Wind Farm (proposed)
- Renewable Energy Zone
- Yarrabee Solar Farm (approved)
- Woodland BESS (proposed)
- Darlington Point Solar Farm (operating)
- Coleambally Solar Farm (operating)
- Coleambally BESS (proposed)

INSET KEY

- Renewable Energy Zone
- NPWS reserve
- State forest

INFRASTRUCTURE PROJECTS

The operation of new projects in the South-West REZ is contingent on Project EnergyConnect.



Source: Updates from project websites: PEC at <https://www.projectenergyconnect.com.au/>;
HumeLink at <https://www.transgrid.com.au/projects-innovation/humelink> ; and
VNI West from <https://www.transgrid.com.au/projects-innovation/vni-west>.

DINAWAN ENERGY HUB PROJECT UPDATE

Site surveys completed, finalising the Environmental Impact Statement (EIS) for the solar farm and battery component.

- The Dinawan Energy Hub is a State Significant Development and will require a comprehensive Environmental Impact Statement (EIS).
- Two separate development applications and EISs will be submitted to the NSW Department of Planning and Environment:
 - Dinawan Solar Farm (with a battery) on track: EIS exhibition in 2023
 - Dinawan Wind Farm EIS exhibition in early 2024.

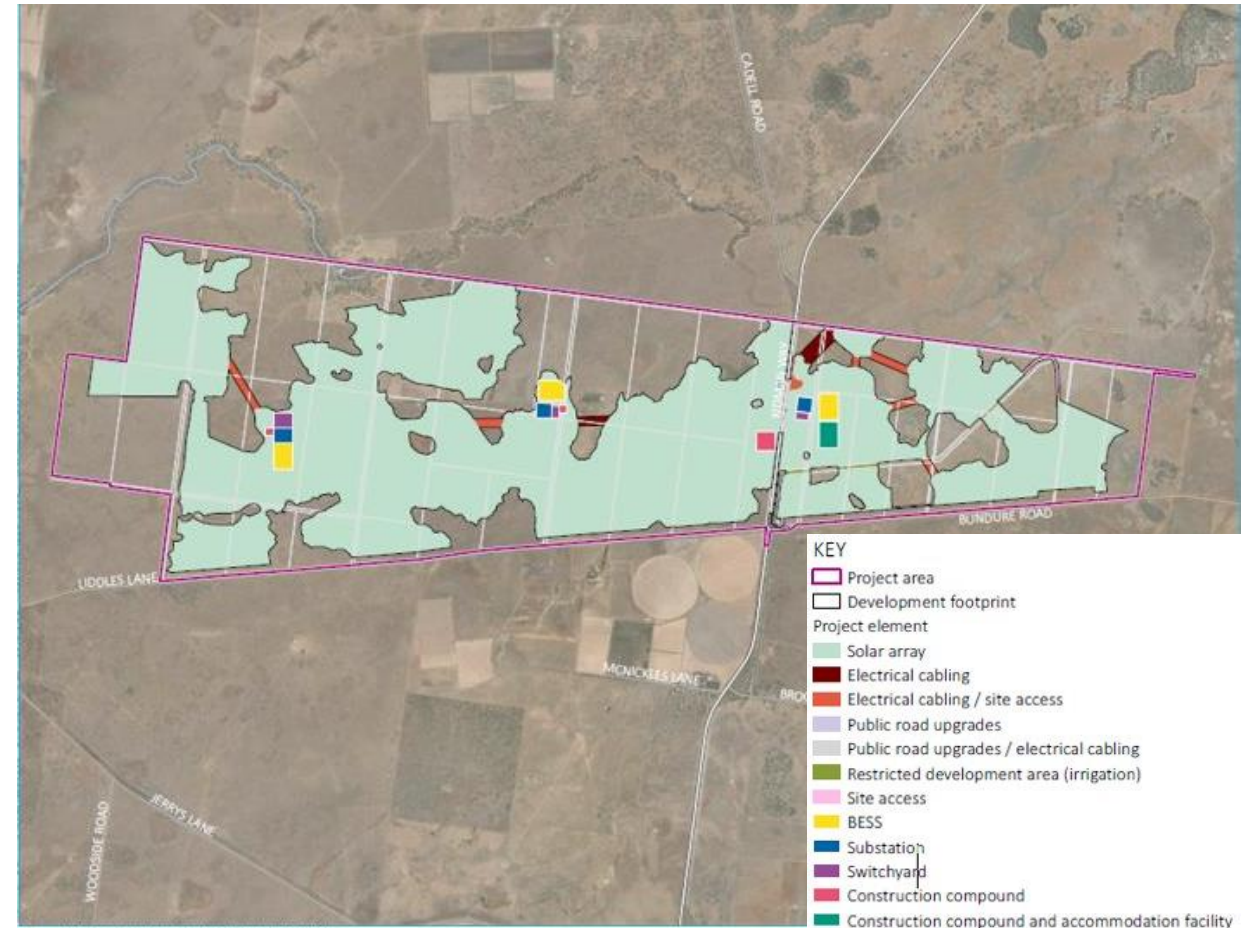
Solar farm and
battery surveys
completed for the
EIS – 2023



Wind farm
surveys on track –
early 2024



Construction
from 2025-
2026
Operations
from 2027
onwards



Source: ENM (2022); DFSI (2020, 2021); ESRI (2022); GA (2011)

ASSESSMENT UPDATE

Progressing the EIS for the solar farm and battery component. Working through design refinement for the wind farm following extensive survey efforts.

Technical Study	Purpose and progress	Solar (in progress/near complete)	Wind (in progress/near complete)
 Aviation	Assessing potential for wind turbines to impact local aviation activity.	-	✓
 Biodiversity	Extensive surveys continue, refining design to avoid impacts where possible.	✓	✓
 Bushfire	Understanding risks to project infrastructure and surrounding land	✓	✓
 Cultural heritage	Extensive surveys with representatives from local First Nations communities	✓	✓
 Historic heritage	Developing an understanding of the history of the landscape, including surveys	✓	✓
 Hazards	Understanding hazards associated with key infrastructure including batteries	✓	✓
 Noise and vibration	Noise modelling used to understand noise impacts on neighbouring residents	✓	✓
 Soils and agriculture	Testing land and soil capability on-site and quantifying impacts to local agricultural production	✓	✓
 Water and flooding	Flood modelling used to understand potential for inundation during flood events	✓	✓
 Transport and traffic	Understanding upgrades to the local road network needed to facilitate vehicle movements	✓	✓
 Visual amenity	Assessing potential visibility of panels and turbines from closest residences and road corridors.	✓	✓
 Social and economic	Engagement continues, understanding potential benefits and impacts on the local community.	✓	✓
 Waste	Developing an understanding of waste volumes and appropriate disposal options.	✓	✓

CONSULTATION MECHANISMS

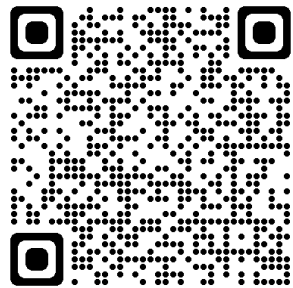
The 'EIS Exhibition Period' will be the best time for community to provide feedback about the project.



We encourage all stakeholders and community members to get involved in the consultation process. All documentation about the Dinawan Energy Hub projects is available on the website of the NSW Department of Planning & Environment:

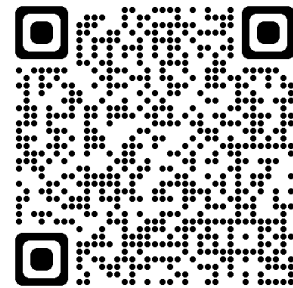
Dinawan Solar Farm

<https://www.planningportal.nsw.gov.au/major-projects/projects/dinawan-solar-farm>



Dinawan Wind Farm

<https://www.planningportal.nsw.gov.au/major-projects/projects/dinawan-wind-farm>



If you are interested in having a one-on-one meeting with Spark Renewables you can email info@dinawanenergyhub.com or leave a voicemail at 1300 271 419.

SETTING OBJECTIVES FOR BENEFIT SHARING

AUGUST 2023

APPROACH TO COMMUNITY BENEFIT-SHARING

Spark Renewables is a member of the Clean Energy Council and signatory to their Best Practice Charter for Renewable Energy Projects – a set of voluntary commitments to engage respectfully with the communities around us, to be sensitive to environmental and cultural values, and to make a positive contribution to the regions in which we operate.

CEC key principles of benefit sharing with communities

Appropriate	The local community provides guidance on how benefit sharing can create a positive, lasting and meaningful impact for their local community. The developer works with the local community to develop specific benefit sharing strategies that respond to their unique local context and need.
Flexible	The lifecycle of renewable energy developments is significant (25 years or more), and much can change in a community during that period of time. It is therefore important to build in flexibility so that benefit sharing can evolve with community needs.
Transparent	Benefit sharing is managed in a transparent and accountable way that involves local stakeholders.
Integrated	Benefit sharing seeks to integrate the developer and the project as valuable community members
Mutually beneficial	The approach is designed to bring mutual benefit to local communities, the project and its owners and financiers.
Strategic	Benefits should be provided from at least the start of construction and throughout the operational phase. One-off initiatives do not provide ongoing sustainability or support.



Claire Dawson at a community consultation day



Smoking ceremony at Bomen Solar Farm pre-construction

OUR PARTNERSHIP WITH THE ROYAL FAR WEST

Spark Renewables is sponsoring two scholarships in support of the “Health country kids scholarships” initiative.

Healthy country kids scholarships



Help a country child to achieve their full potential and help Royal Far West close the funding gap of \$5000 per child. A sponsorship covers:

- Up to two weeks' accommodation and meals at Royal Far West Lodge to access the Centre for Country Kids in Manly for the child, parent/s siblings
- A multidisciplinary assessment and diagnosis, including access to a child psychiatrist, developmental paediatrician, social workers, speech pathologists, clinical psychologists, dietician, occupational therapists, and dietetics.
- Access to the RFW School for the duration of the visit
- Participation in an after school therapeutic recreation program
- Emotion coaching for parents
- Follow up with the home school, GP's and other local services
- Much needed respite for the whole family

With your help, we provide the diagnosis and the support they need to have healthy, happy futures.



Scholarships for country children close the funding gap and supports a child from regional NSW to access our vital services.



COMMUNITY BENEFIT FUND

As a State Significant Development project in the NSW South-West REZ, there are a number of potential funding streams from the Dinawan Energy Hub.

Rate Guide		Potential Stage 1		All Stages	
Solar		200 MW		1,000 MW	
	per MW per year	per year	30 year	per year	30 year
	\$300	\$60,000	\$1.8m	\$300,000	\$9.0m
Wind		400 MW		1,500 MW	
	per MW per year	per year	30 year	per year	30 year
	\$600	\$240,000	\$7.2m	\$900,000	\$27.0m
Combined		600 MW		2,500 MW	
		per year	30 year	per year	30 year
		\$300,000	\$9.0m	\$1.2m	\$36.0m

- As a project in the Murrumbidgee LGA and Edward River LGA (for the wind farm), a Voluntary Planning Agreement is required to be established to specify the funding commitments and structure for distribution of funding.
- The community fund would be in addition to the neighbour benefits proposed for residents up to 8km from wind turbine locations.



Bomen Solar Farm Community Fund has committed \$500,000 to Mount Austin High School's programs "Girls at the Centre" and "Transition Program".



Bomen Solar Farm Community Fund has committed \$350,000 to the greening of Wagga Wagga and Eunony Valley

GOVERNANCE AND ADMINISTRATION

- Transparent processes and rigorous governance structures are essential given the significant amount of funding under consideration
- Governance could be through a:
 - Purpose made organization;
 - Existing charity or foundation;
 - Council administered Section 355 committee under Local Government Act; or
- Community involvement in committee will be essential, whichever form of governance is utilised.
- Outcomes of benefit sharing to be reported on and shared with the wider community

REZ REGIONAL BENEFIT

- Dinawan Energy Hub is within the **South-West REZ** (Renewable Energy Zone) administered by the state run Energy Corporation (**EnergyCo**)
- EnergyCo is expected to charge “Access Fees” which are expected to include the following minimum payments:
 - **\$1,700/MW/year** for **community purposes**
 - **\$600/MW/year** for **employment purposes**
- This funding would be administered by EnergyCo for initiatives within the region (see categories specified in regulation in table alongside)
- The funding is additional to the project led community-benefit sharing

A ‘**community purpose**’ includes a program, service or infrastructure that falls within one or more of the following categories:

- public or community services or infrastructure
- health services or infrastructure
- accommodation or housing supply
- local or regional energy programs or infrastructure
- environmental programs or infrastructure
- parks and recreation infrastructure
- education programs or research
- arts or cultural programs
- tourism programs or infrastructure
- services, programs or infrastructure for First Nations people
- other services or infrastructure that benefit the relevant local community.

An ‘**employment purpose**’ includes a program, service or facility that falls within one or more of the following categories:

- employment programs and associated services and facilities
- skills and training programs and associated services and facilities
- a program, service or facility that supports the relevant employees to gain employment, skills or experience relevant to employment.

TIMELINE OF FUNDING AND BENEFIT SHARING

Other benefits in preparation for the project construction and operations.

Sponsor community events as part of consultation program and on behalf of the company



Knowledge-sharing from site surveys, eg cultural heritage, soil studies, biodiversity



Partner with industry and government to increase participation in procurement tenders, and coordinate construction infrastructure



Supporting training, procurement of local content through the Industry and Aboriginal Participation Plan

Increased sponsoring post Final Investment Decision

Development phase

Construction phase

Operations

IDEAS FROM OTHER PROJECTS

The Clean Energy Council has showcased successful initiatives from renewable energy projects, including Spark Renewables' Bomen Solar Farm.

- Rooftop solar bulk buy scheme
- Employee volunteerism
- Co-ordinated contractor engagement

Benefits from renewable energy



- Utilising construction contractors and available machinery
- Community infrastructure e.g. Sports grounds, pool

Infrastructure improvements



- Biodiversity planting
- Erosion control
- Wildlife sanctuary

Environmental



- Local contractor and business targets
- Safe housing and suicide prevention

Community Enhancement



- Higher education scholarships
- Tafe traineeship

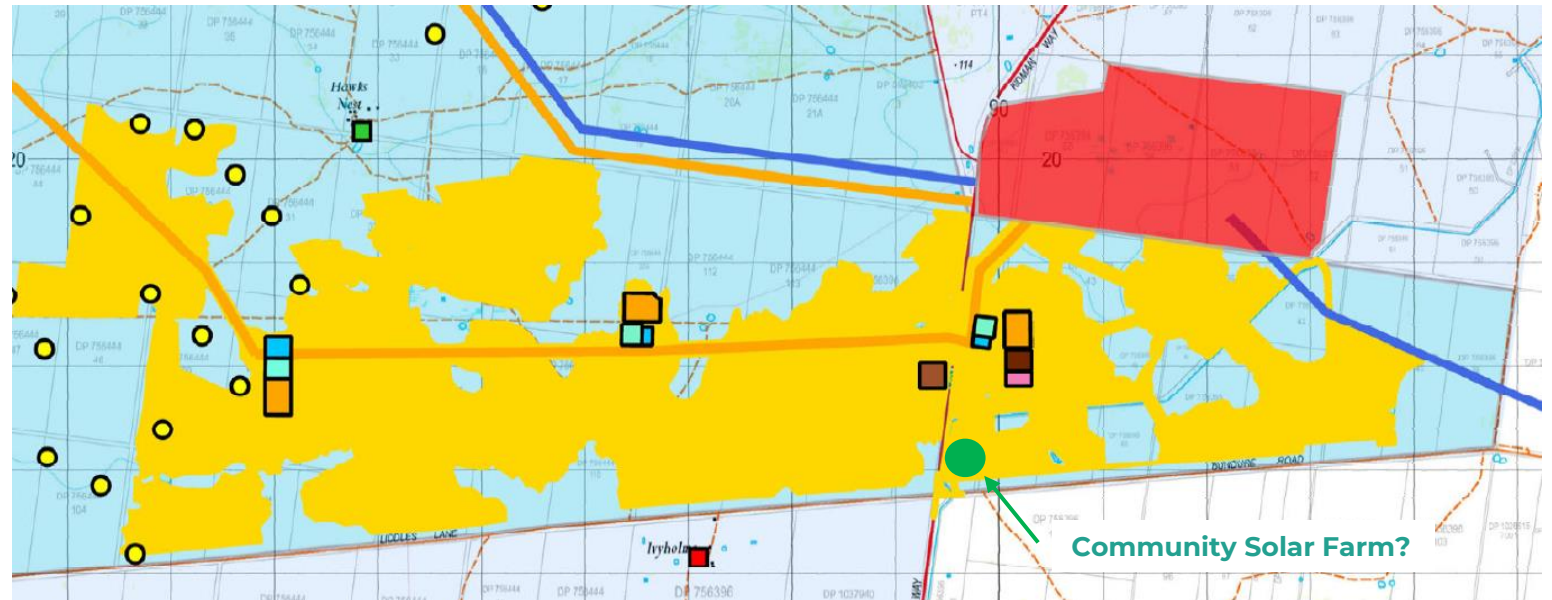
Training and education



COMMUNITY INVESTMENT OPPORTUNITY

Community Owned Solar Farm

- Potential for community members to invest in solar farm and receive a return on investment
- Now more than 100 community-owned renewable energy projects in Australia and thousands worldwide
- Potential to have a **separately connected** and **separately financed** solar farm:
 - 2 MW generation (~7,000 homes)
 - ~\$3m capital cost,
 - ~3,000 solar panels,
 - 6 hectares
- Could be structured as equity or debt.
- Manly different models available (e.g. cooperative or trust)
- Return would depend on risk exposure
- Built at same time as larger Dinawan Solar Farm (up to 1,000 MW) and take advantage of bulk equipment supply (panels, trackers, inverters) and construction economies of scale.
- Electricity could be sold to retailer for return on investment or could be used to (partially) meet community investor's household / business electricity requirements.



IDEAS FROM THE COLEAMBALLY COMMUNITY

Ideas have been collected via interviews, face-to-face meetings with community and council, information days, and emails.

- Electricity discounts
- Subsidise energy infrastructure
- Community investment scheme

Benefits from renewable energy



- Additional Accommodation
- Internet infrastructure upgrade
- Fire and emergency rescue

Infrastructure investments



- Strengthen the health service system

Community health improvement



- Childcare support

Economy



- Capacity-building for small businesses
- Skills development

Training and education



IDEAS FROM THE JERILDERIE COMMUNITY

Ideas have been collected via interviews, face-to-face meetings with community and council, information days, and emails.

- Electricity discounts
- Subsidise energy infrastructure
- Community investment scheme

Benefits from renewable energy



- Internet infrastructure upgrade
- Fire and emergency rescue

Infrastructure investments



- Mental health support initiatives
- Strengthen the health service system

Community health improvement



- Childcare support
- Socio-economic inequality reduction initiatives

Economy



- Capacity-building for small businesses
- Skills development

Training and education



- Greening/Lake

Landscape restoration



IDEAS FOR THE DARLINGTON POINT COMMUNITY

Ideas have been collected via interviews, face-to-face meetings with community and council, information days, and emails.

- Electricity discounts
- Subsidise energy infrastructure

Benefits from renewable energy



- Internet infrastructure upgrade
- Fire and emergency rescue

Infrastructure investments



- Reconnecting Country and cultural and heritage knowledge-sharing

Cultural heritage



- Mental health support initiatives
- Strengthen the health service system

Community health improvement



- Childcare support
- Socio-economic inequality reduction initiatives

Economy



- Capacity-building for small businesses
- Skills development

Training and education



OUR COMMON OBJECTIVES?

Clearly defined and informed objectives for sharing benefits help to guide how community funds, whether voluntary or council payments, are dispensed.



1. Leverage the benefits of renewable energy: reduce energy costs for regional communities and invest in community-owned projects to increase uptake of renewable energy.



2. Strengthen infrastructure by investing in daycare, roads, and communications – to create a positive and lasting legacy benefitting the local community.



3. Reconnect with Country through upskilling cultural heritage knowledge-sharing from Elders and engagement.



4. Uplift community health by tackling issues that are important to local communities; such as prevention of substance use, suicide and domestic violence.



5. Support local economy by upskilling procurement capability, upgrading businesses, and securing local content.



6. Change lives through training and education by setting up industry partnerships.



7. Restore and nurture vegetation and biodiversity.

Anything missing from your perspective?

APPENDIX: REGISTRY OF IDEAS

Cause	Idea
Benefits from renewable energy	<ul style="list-style-type: none"> • Provide electricity discounts to people in the local Aboriginal community undergoing financial hardship and assist first home-owners. • Dinawan community discount electricity scheme as a mechanism to decrease electricity prices in the local area • Development of a BESS in Darlington Point to power a childcare facility. • Subsidise energy for pumps on farms, where many run on diesel because it is cheaper than electricity. • Provide power nearby locations so industry can afford to establish value-adding facilities in the area, eg food processing. • Solar garden' opportunity for community members to invest in solar panels - example is Grong Grong Solar Garden. • Agri-voltaics community farm, a small area of PV panels near the solar farm where different farming practices and crops can be tested with the aim of creating a dual purpose community farm. utilising the land for farming and electricity generation – example is Jack's Solar Garden. • Community investment scheme facilitated by Essential (2MW).
Infrastructure investments	<ul style="list-style-type: none"> • Coly Club Accommodation proposal to address accommodation shortage • Upgrade internet speed. • Resource fire brigade – staff and equipment (truck, shed). • Community sports facility improvements
Cultural heritage	<ul style="list-style-type: none"> • Address social challenges including impacts of colonisation, homelessness, substance use, and reducing heritage knowledge in the area, by reconnecting mob with culture, land, language and community by training local Aboriginal people to provide tourism services to promote culture locally, and supporting opportunities to train new generation of cultural heritage knowledge holders.
Community health improvement	<ul style="list-style-type: none"> • Medical centre in Jerilderie and attracting registered nurses • Provide nursing home funding in Coleambally • Provide funding to staff at palliative care unit in Coleambally – currently state government cannot afford to staff • Fund mental health support programs/services for young adults with intellectual disability • Support 'Can Assist Leeton' (cancer assistance network)
Economy	<ul style="list-style-type: none"> • Childcare centres in Darlington Point and Coleambally. • Reach out to community members who are without computer literacy and support people, particularly in First Nations community, to register themselves as a business (how to get an ABN), training for heritage surveys, and education for managing taxes etc. This would provide autonomy and independence, for those who experience challenges with getting paid because of issues with the intermediary who is coordinating the work • Partner with existing local businesses, i.e., catering businesses to provide food for workers. • To address women missing out on training and employment opportunities: <ul style="list-style-type: none"> – School based traineeships for girls – year 11 and 12 – Aboriginal Learning and Engagement Centre (ALEC) – Wagga Wagga University – cultural heritage courses and Wiradjuri language courses
Training and education	<ul style="list-style-type: none"> • Skill development, capacity-building and career opportunities associated with the project for First Nations people, eg through partnerships with Yanco Agricultural Institute's Aboriginal Rural Training Program (ARTP) run at Tocal College Yanco Campus, cultural heritage awareness training, and NSW Training Services. • Capacity-building and training suggestions via Western Riverina Community College – eg provide tickets, licenses, certificates etc. • Creating a new organisation extending the opportunities for young girls, similar to Tirkandi Inaburra , which is an Aboriginal community run centre for Aboriginal boys aged 12-15 years offering educational, recreational, and cultural programs aimed at developing skills and enhancing cultural identity and self-esteem, or partnering with the existing centre
Landscape restoration	<ul style="list-style-type: none"> • Assist council plans to build a lake.

DIRECTORY

Contacts

Spark Renewables

Level 4, 1A Rialto Lane

Manly 2095 NSW

info@sparkrenewables.com

1300 271 419

Will Stone, Head of Development

Will.Stone@sparkrenewables.com

Claire Dawson, Head of Legal & Community

Claire.Dawson@sparkrenewables.com

Julian Kasby, Senior Development Manager

Julian.Kasby@sparkrenewables.com

Laurie Wallis, Senior Development Officer

Laurie.Wallis@sparkrenewables.com

Andrew Bomm, Community Relations

Andrew.Bomm@sparkrenewables.com

Shaurntae Lyons, Engagement Coordinator

Shaurntae.Lyons@sparkrenewables.com

About Spark Renewables

Spark Renewables is one of Australia's leading developers and long-term owners of renewable energy generation assets.

Starting in 2018 with a 120 MWdc Bomen Solar Farm in Wagga Wagga, NSW, the potential generation capacity of our development portfolio has grown rapidly to approximately 7 GW and spans solar, wind and battery storage projects.

Our goal is to develop and build projects leading the renewable energy transition in Australia. We work with industry innovators and tertiary institutions to provide sustainable, socially acceptable solutions for generation of electricity.

Spark Renewables is based in Manly, NSW, and is part of the Spark Infrastructure Group. Find out more at www.sparkrenewables.com.

Disclaimer

This presentation and all information and documents in any oral, hardcopy or electronic form prepared specifically for it (collectively, Information) has been prepared by, or on behalf of, Spark Renewables (ABN 90 632 860 023). It is given in summary form and Spark Renewables does not warrant or represent that the Information is accurate, current or complete. The Information is general information only and is not, and is not intended as, professional or legal advice to a user.

A user requiring information other than that of a general nature in relation to, in connection with or referred to in the Information, must obtain independent professional advice relevant to their own particular circumstances. The Information may include the views or recommendations of third parties and does not necessarily reflect the views of Spark Renewables or indicate a commitment to a particular course of action.

Spark Renewables is not liable or responsible to any person for any injury, loss or damage of any nature whatsoever arising from or incurred by the use of, reliance on or interpretation of the Information. Any unauthorised use of the Information is strictly prohibited. A user is not authorised to copy, circulate, disclose, disseminate or distribute the Information, either whole, or in part, to any third party, unless first explicitly agreed by Spark Renewables.