

MALLEE WIND FARM

COMMUNITY NEWSLETTER #8, April 2026

Overview

Mallee Wind Farm is a renewable energy project located in the Wentworth Local Government Area in New South Wales, approximately 16 km north-east of Buronga and 17 km north east of Mildura, Victoria.

Co-located with a battery energy storage system (BESS), Mallee Wind Farm has a proposed generation capacity of ~400 megawatts (MW) and storage capacity of 200 megawatt hours (MWh).

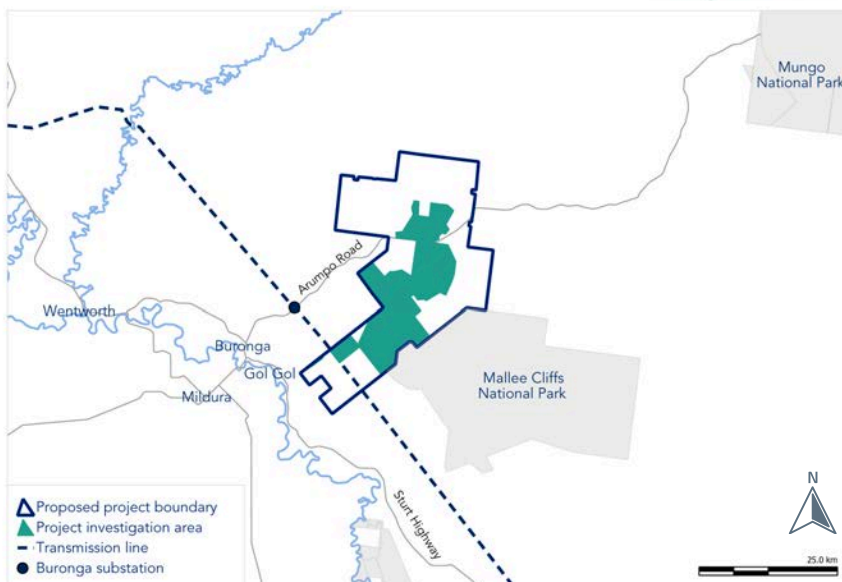
The site is ideally located on flat, cleared land with a strong wind resource. The Mallee Wind Farm is well positioned to generate, store, and dispatch electricity to the National Electricity Market.

The project is developed by Spark Renewables, a leading developer and long-term owner of Australian renewable energy projects.

More information about the project is available at malleewindfarm.com.

KEY UPDATES:

Following public exhibition of the **Environmental Impact Statement**, Spark Renewables has now lodged its **Response to Submissions**. The project will continue through the assessment process in 2026.



PROJECT



WIND FARM

Up to 76 wind turbines
(up to 280 metre tip height)



BESS

Capacity to store and supply 200 MWh

IMPACT



Equivalent to supplying electricity to households with an annual consumption of 6,700 kWh



Up to 225 direct jobs during peak construction and around 30 jobs during operations



Annual contributions to community and council funds during construction and operations based on 400 MW capacity

We are committed to delivering long-term positive outcomes for the community

COMMUNITY

Consultation

Consultation for the Mallee Wind Farm project commenced in August 2022 with the announcement of the project and our first information sessions. We engaged closely with key stakeholders to better understand matters important to the local community. We have:

- Corresponded with >340 stakeholders via face-to-face and online meetings, letters, emails and phone calls,
- Hosted 9 community information sessions,
- Shared 8 project newsletters with 130 subscribers, and
- Delivered newsletters to ~1,100 households

The project Environmental Impact Statement was on public exhibition between 13 November and 10 December 2024, receiving 140 submissions. There were 30 submissions from stakeholders within 100 kilometres from the project. Further information was requested about the project impacts and management plans, with no objections raised by the local council or government agencies.

We appreciate the time taken by everyone who provided feedback during the consultation period, and we continue to engage as part of the project development.

Upcoming Events

Spark Renewables is committed to open and ongoing engagement with the community throughout the development of the Mallee Wind Farm. We value the opportunity to meet with local residents and community groups to share project information, answer questions, and hear community feedback to understand the ongoing concerns and learn about benefit-sharing opportunities. Our project team will continue to attend local community events where we host an information stall and provide updates on the project.



You can visit Spark Renewables' information stall at:

- **Mildura Field Days** on 15-16 May 2026
- **Wentworth Show** on 29-30 August 2026

INTEREST IN PROJECT IMPACTS

There were 61 public submissions that identified specific environmental, social and economic impacts of the project. Most of these related to various social impacts (44%); followed by questions about management of traffic, waste and water use (24%); protection of biodiversity (23%); and planning for aviation and bushfire safety (9%).

Social - visual, economic, noise, health, 44%
heritage, agriculture

24%

Infrastructure - waste, water & traffic

23%

Biodiversity - birds & bats

9%

Safety - bushfire & aviation

Source: Mallee Wind Farm Response to Submissions (April 2026)



An information stall held at 2025 Mildura Field Days



Visit to the fire-breaking crop testing site as part of a study led by researchers at the Charles Sturt University Wagga Wagga campus (March 2026)

PLANNING

Development Application

The Mallee Wind Farm is a State Significant Development under NSW planning legislation and requires a rigorous planning and assessment process that ensures environmental, social, and economic impacts are properly considered.

Following the lodgement of a formal 'Response to Submissions' and an 'Amendment Report' for Mallee Wind Farm in April 2026, the project is now under assessment by the NSW Department of Planning, Housing and Infrastructure (DPHI). We will continue to provide updates as the project progresses. You can check the project planning status on the NSW Planning Portal for Major Projects at:

🔍 planningportal.nsw.gov.au/major-projects/projects/mallee-wind-farm

Scan to view the project development application



Voluntary Planning Agreement (VPA)

Consistent with the *NSW Benefit Sharing Guidelines*, the project would contribute \$1,050 per MW each year during construction and operations.

Spark Renewables is currently engaging with the Wentworth Shire Council, community and First Nations organisations to co-design a benefit-sharing program to create lasting social value for the community.



In partnership with the Regional Educational and Industry Partnerships (RIEP), Spark Renewables participated in the 'Renewables Ready Day' school program in Deniliquin (March 2026)

Mallee Wind Farm Under Assessment by the DPHI

A formal 'Response to Submissions' for the project sets out how key matters raised in public submissions and agency advice – including road upgrades, biodiversity surveys, and cultural heritage assessments – have been addressed, and the changes or commitments made as a result as part of the development application. The 'Amendment Report' documents changes to the project, including an updated transport route for oversize turbine components. An assessment of the development application is currently being undertaken by the NSW DPHI before a determination can be made.



↑
We are here

PROJECT UPDATE

Response and Project Amendments

Throughout the planning phase, we have actively engaged with the local community and interested stakeholders to refine the project development application.

In response to issues raised during the consultation process, further investigations – including biodiversity, water resource, and aviation assessments; transport and landscape studies; and heritage documentation – resulted in changes to the project layout and transport route and informed impact management strategies. We will continue to consult with the local community and government agencies to develop plans in response to raised issues, including:

- Aboriginal Cultural Heritage Management Plan
- Biodiversity Management Plan and Biodiversity Stewardship Agreements
- Bird and Bat Adaptive Management Plan
- Buffer zone from the Mallee Cliffs National Park
- Bush Fire and Emergency Management Operations Plan, including dedicated water supply and pumps
- Community plans (benefit-sharing, engagement, accommodation, employment, industry and Aboriginal participation)
- Construction management plans (noise and vibration, soil and water, traffic and transport)
- Decommissioning and Rehabilitation Plan
- Erosion and Sediment Control Plan
- Operational Environmental Management Plan



Transport Route Update

Following consultation with Transport for NSW, the proposed over-size, over-mass (OSOM) transport route has been changed from the Port of Newcastle to the Port of Portland. This updated route:

- Reduces the overall transport distance
- Minimises impacts to third-party land and assets
- Reduces the extent and complexity of required upgrades
- Allows for the safe transport of larger turbine components
- Results in minimal additional environmental impact

Updated transport studies can be viewed in the Amendment Report on the NSW Planning Portal for Major Projects at:

🔍 planningportal.nsw.gov.au/major-projects/projects/mallee-wind-farm



Sturt Highway, Gol Gol